



# JNANA PRABODHINI FOUNDATION



# TABLE OF CONTENTS

<b>ABOUT JPF</b>	1
<b>FROM THE PRESIDENT'S DESK</b>	2
<b>JPF CAMPAIGNS</b>	
> LEARN INDIA CAMPAIGN	3
> FLOOD RELIEF CAMPAIGN	4
> SPECIAL ANNOUNCEMENT: JPF REACHES THE UNITED NATIONS	5
<b>JPF-SUPPORTED PROJECTS</b>	
<u>EDUCATION</u>	
> SPONSOR A CHILD	6
> ENDOWMENT FUND	8
> SCHOOL OF JOY	9
> HOUSE OF JOY	10
> FESTIVAL OF READING	11
> WONDERQUEST LIBRARY	12
> PERSONALITY DEVELOPMENT PROGRAM	13
> TALENT DEVELOPMENT	14
<u>VOLUNTEER-LED PROGRAMS</u>	
> TRANSLATION PROJECT	15
> BEYOND LANGUAGE BARRIERS	16
> PRERANA SETU	17
> BAAL PRABODHINI	18
> JPF ANALYTICS	19
> JPF IBRETA	20

# TABLE OF CONTENTS

## WOMEN LEADERSHIP

> REVOLVING CAPITAL	21
> NAV DISHA	22
> AAROGYA SAKHI	24
> HEALTH IMPROVEMENT	25
> ALTERNATE EMPLOYMENT	26
> SKILL DEVELOPMENT	27
> INITIATIVE FOR SEPARATED, WIDOWED, AND DIVORCED WOMEN	28
> NAVI OOMED	29

## **NEW SECTION: RURAL INFRASTRUCTURE DEVELOPMENT**

> HEALTH CENTER AT VELHE	30
> WATER STORAGE DEVELOPMENT	31
> SOLAR PANEL INSTALLATION	32
> HARALI SCHOOL BUILDING MAINTENANCE	33
> LIBRARY AT HARALI	34
> CYCLES FOR GIRL STUDENTS	34
> RENOVATION AT SHIVAPUR CENTER	35

<b>JNANA PRABODHINI GLOBAL NETWORK</b>	36
--	----

<b>JPF FINANCIALS</b>	39
-----------------------	----

<b>DONATION PARTNERS AND FACEBOOK FUNDRAISERS</b>	40
---	----

<b>ACKNOWLEDGMENTS</b>	41
------------------------	----

<b>VOLUNTEER WITH JPF</b>	42
---------------------------	----

# ABOUT JPF



## About the Jnana Prabodhini Foundation

In 2018, Jnana Prabodhini members in the U.S. began discussing global challenges and possible solutions to make the world a better place. Aiming to focus efforts toward solving these challenges led to JPF's launch in Aug 2019. Rooted in Jnana Prabodhini's six-decade grassroots legacy, we are a volunteer-driven organization. With overwhelming support, we raised over \$1.4M in contributions, engaged 150+ volunteers, and led 30+ projects in just 6 years, creating lasting impact for 50,000+ Indians through community-driven initiatives.

## Vision

We dream of a world where every child's potential is unlocked, villages thrive in self-sustainability, and gender disparity is a thing of the past. At the core of our vision lies the belief in bridging communities through inclusivity, compassion, and equity.

## Mission

We focus on advancing education and health in underserved communities. We support students from financially disadvantaged backgrounds in pursuing quality education through financial assistance, educational resources, and skill development. We also promote women's financial independence, health, and leadership development.

## The JPF Logo

The logo, featuring the letters J, P, and F, reflects JPF's community-oriented approach. The three circles represent people and further emphasize the collective spirit at the heart of our work. The symmetry within the letters J and P weaves them together, symbolizing the enduring ties we share with our motherland.

## About Jnana Prabodhini

Jnana Prabodhini, JPF's parent organization, is a non-profit headquartered in Pune, India. Founded in 1962 as an educational and research institution, Jnana Prabodhini's work has expanded to rural development, women's empowerment, healthcare, and national integration. Jnana Prabodhini directly reaches over 100,000 people through its 5 main centers (Pune, Nigdi, Solapur, Harali, and Salumbre) and several other concerted programs spread across Maharashtra, Goa, Chhattisgarh, Jammu and Kashmir, Jharkhand, and the North-East. Today, it continues to grow as a dedicated, multi-faceted, non-partisan, and spiritually-guided organization.

# FROM THE PRESIDENT'S DESK

Dear JPF Family,

I begin with deep gratitude to JPF volunteers, well-wishers, and donors who have believed in the vision of the Jnana Prabodhini Foundation (JPF). I am equally thankful to our Consultative Committee members, program leaders, and partner institutions whose dedication has shaped this journey. Serving this community has been both a privilege and a humbling responsibility.

Looking back, the growth has been remarkable. Today, JPF is a vibrant community of nearly 1,800 members across 12 chapters that go the extra mile to support each other. Through six programs and five teams, engaging more than 200 volunteers. We have also raised over \$1.8M and supported 40+ projects that directly impact students, women, and communities in India. Beyond numbers and projects in *Education* and *Health*, we have built a structure that gives JPF purpose, clarity, and accountability.

What we truly achieved goes deeper. We built a strong community that connects people with meaningful work in India. We created opportunities to engage with students and grassroots initiatives. Maintaining operating costs below 1.5% while ensuring transparent reporting reflects our commitment to responsibility. Weekly meetings without interruption, thoughtful planning from the whiteboard, and standing firmly by our vision, mission, and values have been the foundation of this institution. The confidence to grow from an expected \$100K in JPF's first year, 2019, to raising over half a million this year reflects the collective belief of this community.

I warmly congratulate Aakash Chowkase and Revati Deshpande as they take on the responsibilities of President and Vice President. I have full confidence that they will take JPF to even greater heights.

Finally, I thank all of you for your trust and the opportunity to serve JPF for the maximum term allowed. This journey has been deeply meaningful, and I remain grateful to be part of this extraordinary team and community.

Thanks,  
Pranav Kulkarni, President  
Jnana Prabodhini Foundation

# **JPF**

# **CAMPAIGNS**

# LEARN INDIA CAMPAIGN

*Empowering India, one student at a time*

For millions of children in India, particularly in rural and marginalized communities, access to education remains a distant dream. **Learn India is JPF's** strategic response to the urgent, evolving need for equitable education. Since its inception in 2020, this annual initiative has raised funds to sustain and expand JPF's educational programs. Learn India 2025 ran for over two months with a team of 11 volunteers. The team exceeded the \$100,000 goal, raising a **historic \$129,000!**

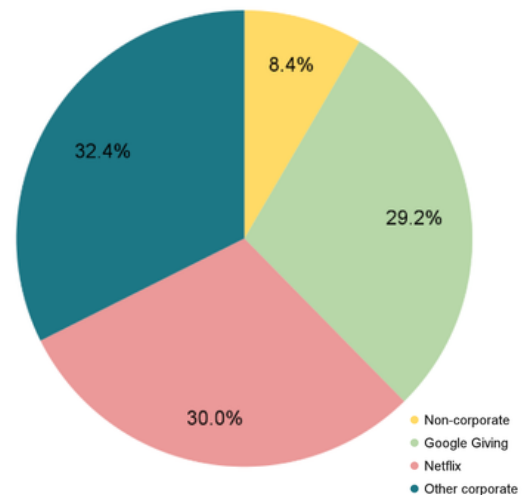
Raising this amount was impossible without your generosity--the donors and the institutions who helped us get there. Corporate donation matching and volunteer hour matching programs made significant contributions alongside personal donations.

From the funds raised, we will

- Continue the education of 300+ students from low-income families through the **Sponsor A Child** program,
- Build up our **endowment fund** to secure the future of educational projects in Solapur and Harali for low-income and tribal students,
- Update **technology and infrastructure** at the Rural Educational Center at Harali,
- Run educational programs like **Festival of Reading, WonderQuest Library, House of Joy, and School of Joy.**



School of Joy in the tribal Low-Income Neighborhood of Tavshi Village, near Harali



Sources of funds – Showing the effectiveness of corporate donation and volunteer hour matching programs



Festival of Reading - 3-day residential workshop on writing and recitation for budding writers and editors from 8th to 11th grades

# FLOOD RELIEF CAMPAIGN

*Responding to a calamity. Helping to rebuild.*

Severe floods across Solapur and the Marathwada region affected over 7 million hectares of land and displaced more than 11,000 families. Homes, crops, and essential infrastructure were extensively damaged.

Immediate relief was critical to restore shelter, food security, access to electricity, educational continuity, and livestock support so that families could rebuild their lives and livelihoods. The campaign **took place in October, raising \$37K** to support disaster management and flood relief work. We sincerely thank all the donors, including the **India Development and Relief Fund (IDRF) and the Bruhan Maharashtra Mandal (BMM)**, for providing timely support.

We provided comprehensive support in housing, livelihoods, education, and agriculture to enable immediate recovery and long-term rehabilitation. This included construction of tin sheet houses in Savaleshwar and other flood-impacted villages; livelihood assistance through Atta Chakki machines, a sewing machine, and essential materials for income restoration; educational infrastructure support to Zilla Parishad Primary School at Ghodake Vasti and aid to nearly 200 students; distribution of food kits to 400 families; solar lamps to 50 households facing power disruptions; and extensive fodder support benefiting 300 farmers and villagers.



Tin sheet houses for the affected families



Fodder supply to affected farmers



Livelihood support to photographers

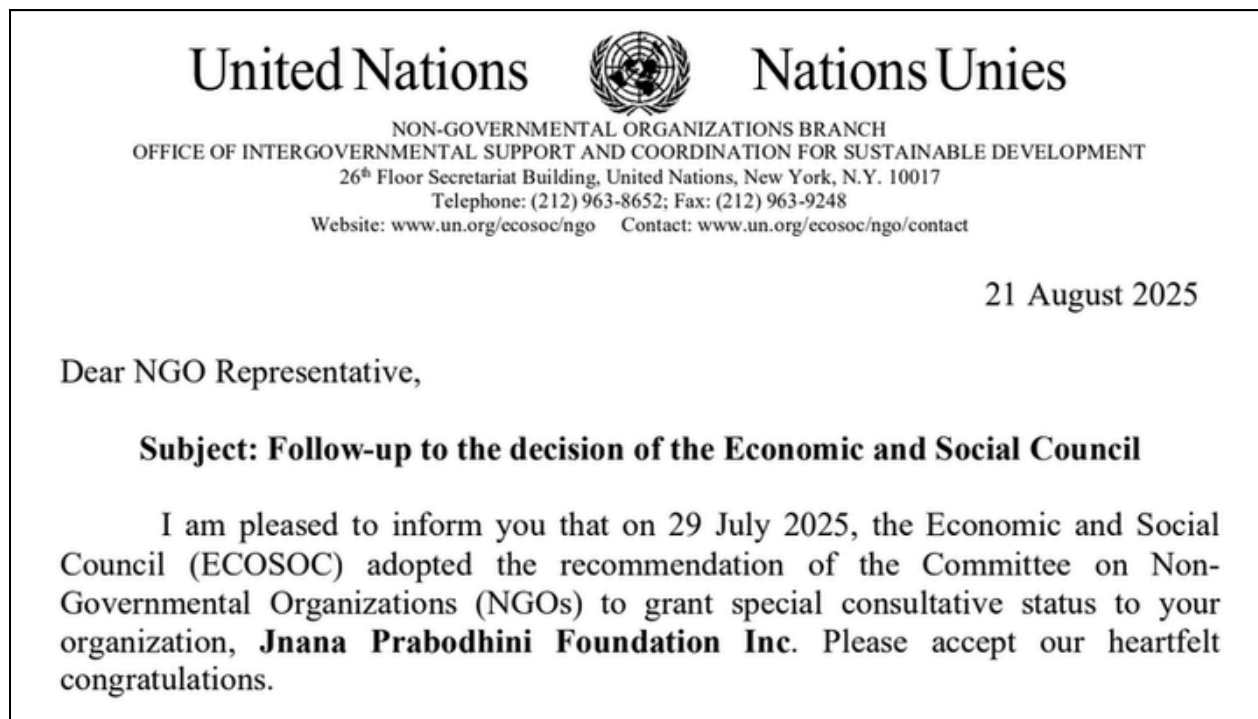


Food kits distribution drive

# SPECIAL ANNOUNCEMENT: JPF REACHES THE UNITED NATIONS!

*JPF has been granted Special Consultative Status at the United Nations Economic and Social Council (UN ECOSOC).*

This milestone comes after two years of effort, patience, and rigorous evaluation, and it recognizes JPF's grassroots impact, public engagement, and contribution to social policy. With this status, JPF can now send official representatives to major UN meetings and conferences in New York, Geneva, and Vienna, including ECOSOC sessions, the Human Rights Council, and the UN High-Level Political Forum. We will also have the opportunity to submit statements, speak at UN forums, and collaborate with UN bodies and global non-profits on initiatives aligned with our mission. This is a transformative step for JPF, one that opens doors to international partnerships, visibility, and long-term global impact. The Permanent Mission of India to the UN congratulated JPF on this milestone!



Official letter from the United Nations Economic and Social Council (UN ECOSOC) congratulating JPF on its newly granted Special Consultative Status.

**JPF-SUPPORTED  
PROJECTS  
IN  
EDUCATION**

# SPONSOR A CHILD

*Supporting students from financially weaker backgrounds to continue their education*

The Sponsor A Child initiative has now completed five impactful years of enabling educational access and opportunity for children from under-resourced communities. Jnana Prabodhini runs five schools, two vocational training centers, and a girls' hostel in Maharashtra. We partner with these facilities to provide annual tuition support, essential learning resources, and sustained engagement that help students stay enrolled, motivated, and on track towards their goals.

## Key Impact Locations and Initiatives

### 1. JP Navanagar Vidyalaya, Nigdi (Pre Primary, Primary, & Secondary School)

- Supports students from low-income urban industrial communities through holistic academic and extracurricular development.

### 2. JP Harali (Primary & Secondary School)

- Empowers children from drought-prone rural and tribal farming families with modern education and digital learning infrastructure.

### 3. Velhe Center (Girls' Hostel)

- Promotes girls' education in remote rural areas through scholarships and safe hostel access, preventing dropouts due to financial and social constraints.

### 4. Nagari Vasti, Pune

- Provides quality education, mentorship, scholarships, and skill development for low-income families in Pune City.



JP Navnagar Vidyalaya - Sports Presentation: Mallakhamb



Girls at Velhe Hostel learning art and crafts

## Key Impact Locations and Initiatives

### 5. JP Shivapur (Vocational Training Center)

- Offers hands-on training and courses in lathe, CNC, electrician, fabrication, basic computer training, and solar technology to help students gain job-oriented expertise.



Shivapur Vocational Training Center - Visit by LyondellBasell and JPF volunteers

### 6. Gram Prabodhini, Salumbre (Secondary School & Vocational Training Center)

- Offers technical vocational training to bridge the skill gap and prepare students for self-sustaining careers.

### 7. JP Solapur (Support for Students from Remote Areas of Manipur)

- Sponsors students from villages in Manipur, covering their education, accommodation, and living expenses.



Manipuri students at Solapur won Gold and Bronze medals in the inter-school swimming competition



**The Sponsor A Child program has provided sustained educational support to nearly 2,000 students, unlocking opportunities for growth and self-reliance.**

Site	Category	Project Head	Amount (\$)	Students Sponsored
JP Navanagar Vidyalaya, Nigdi	Primary & Secondary School (Urban)	Shriram Inamdar	\$10,000	67
Velhe Center	Girl's Hostel (Rural)	Suvarna Gokhale	\$3,000	28
JP Harali	Primary & Secondary School (Rural)	Abhijit Kapre	\$20,000	80
Nagari Vasti Gat, Pune	Low-income Neighborhood Development	Harsha Kirve	\$5,000	11
JP Shivapur	Vocational Training Center	Mitesh Achwal	\$10,000	28
Gram Prabodhini, Salumbre	Vocational Training Center	Ganesh Bhatane	\$5,000	14
JP Solapur	Secondary School Manipur Students	Amol Gangji	\$21,000	14
<b>Total</b>			<b>\$74,000</b>	<b>242</b>

### *How can you help?*

*For just \$1 a day (\$365), you can sponsor one student's education for a full year.*

# ENDOWMENT FUND

## *Ensuring continuous support for students in Harali and Solapur*

The *Sponsor A Child Endowment Fund* was created to ensure long-term, sustainable support for children’s education. Because each child requires 12–16 years of continuous support, stable funding is essential. Till 2024, JPF has supported over 1,400 students by raising more than \$400K through the generosity of donors.

While several schools required temporary support during COVID, two initiatives continue to need sustained funding. Jnana Prabodhini Harali, a rural school in a low-income district, supports students primarily from farming families. Jnana Prabodhini Solapur hosts and educates students from Manipur’s hilly areas, where secondary education opportunities are scarce.



Students from Manipur won football competition



Students won marathon & swimming competitions



**The Sponsor a Child Endowment Fund will start supporting students at Harali and Solapur starting in 2027.**

To ensure the continuity of this support, the Sponsor A Child Endowment Fund was established through a dedicated initiative by donors and volunteers. The fund structure was established, and an MoU was formally signed on December 3, 2025, marking an important milestone in securing long-term sustainability. The Endowment Fund aims to build a \$1 million corpus over the next 5 years. Once a sizable amount is raised, starting in 2027-2028, the interest on the fund will start to support students, ensuring stable, sustained assistance for these programs in the years ahead.



Manipuri students in Solapur learning Flute

### *How can you help?*

*For \$6,000, you can support one student throughout schooling, with \$360/year in interest.*

# HOUSE OF JOY

*Enhancing education by establishing dedicated learning spaces equipped with essential resources and guided by a local facilitator*

House of Joy is an initiative by Jnana Prabodhini Harali for children from nomadic tribes, where portable classrooms are installed in villages where learning spaces are unavailable. These classrooms create dedicated environments where students can explore, learn, and thrive. They are quick to install, cost-effective, portable, and require fewer legal approvals, making them a practical solution for remote rural communities.



Inauguration of House of Joy at Jevli



**Thanks to Analog Devices Foundation for supporting the installation of four Houses of Joy, enabling daily education for 180 students and providing a dedicated space for their hobbies and arts!**

In 2025, four such pre-fabricated classrooms were installed with the support of Analog Devices Foundation in South Jevli, North Jevli, Koral, and Jakhni Tanda in Dharashiv district - remote settlements with limited educational infrastructure.

These dedicated spaces now support daily learning for over 180 children, strengthening foundational literacy and reducing absenteeism. Beyond education, these structures are also used for women's skill-building sessions, health meetings, and youth programs, gradually evolving into vibrant community development centers.



Installation of the House of Joy at Koral



Inauguration of House of Joy, Koral in Dec 2025

## *How can you help?*

*For \$5,000, you can support one House of Joy, helping 100+ students in 5 years.*

# SCHOOL OF JOY

*Community-based, culturally relevant educational program for students from nomadic tribes and villages*

The *School of Joy* initiative supports children from marginalized rural and nomadic communities in Harali and Velhe, Maharashtra. The project provides community-based learning spaces and local facilitators who offer academic support, life-skills training, and opportunities for creative development. It strengthens foundational learning, builds confidence, and fosters healthy habits among children who often lack guidance at home.



Students following local facilitators at a new center

**“ Thanks to Indian Roots USA for its \$16,000 in support, which helped over 900 tribal and rural children improve their literacy, study habits, hygiene awareness, and confidence. ”**

In Harali, 900 students from 16 settlements and 9 villages participated in this initiative. 35 teachers and 5 coordinators managed 5 new centers, in addition to the previous 25. Primary students strengthened literacy and comprehension, while a middle-school pilot in 7 centers supported 150 students in developing study habits and self-learning skills. In Velhe, JPF supported a Diwali gathering for 116 Katkari children from 8 settlements. Activities included street plays on cleanliness, group games, diya painting, and distribution of hygiene kits and Diwali sweets, thereby fostering learning, creativity, and community engagement.



Students engaged in self-learning tasks



Katkari students enjoying creative task

***How can you help?***

***Your \$2,000 can support one School of Joy with up to 40 students for a year!***

# FESTIVAL OF READING

*This is a journey from reading to all-round development supported by initiatives such as reading encouragement and teacher trainings*

Reading is the foundational skill that enables understanding, communication, and critical thinking, thereby strengthening learning across subjects and enhancing overall brain development. The *Festival of Reading*, now in its third year, aims to instill a love of reading in children, especially in rural areas.



Teacher's training camp at Nigdi

## Content Creation and Distribution

As part of this initiative, 225 teachers were engaged through a network to promote reading in their schools. To sustain the rise in students' reading interest, we launched discounted annual subscriptions, resulting in 7,000 new enrollments.



**Thanks to Indian Roots USA for \$18,000 in support to enhance reading skills for more than 10,000 students.**

## Activities for Teachers

Through this initiative, 74 selected teachers (47 past and 27 new) received curated materials to enhance students' reading skills. These teachers participated in eight online sessions focused on reading strategies, effective teaching methods, and engaging ways to enhance learning. For in-person learning and experience sharing, 31 teachers participated in residential workshops in Nigdi from 3-5 May and in Pune from 29-30 June to strengthen the effective use of reading materials and promote best practices for using reading to support students' mental and intellectual development.

## Activities for Students

Children's literature sessions were conducted across 10 schools, engaging 500 students through interactive reading, independent reading, reading aloud, and presentation activities that fostered interest, expression, and confidence. The program included



Reading and writing workshop for students

appreciation and interpretation workshops, presentations, and language-based games. Along with literature sessions, a four-day residential workshop was conducted in Nigdi, where 31 students and 3 teachers participated to nurture future writers and speakers. To further this objective, we held a monthly “Meet the Author” session for up to 500 students, featuring live interactions with authors and boosting literary curiosity and engagement.

## WONDERQUEST LIBRARY

*Supporting students through building reading spaces and libraries to cultivate a lifelong love for reading*

To sustain reading habits during school vacations, the project introduced a Home-based Library initiative. Students from grades 7–10 were encouraged to set up and manage mini libraries in homes or nearby community spaces. With participating schools receiving curated book sets, we established 56 student-run libraries through this support.



Students individually reading books provided through this initiative

“Support of \$5,000 for book subsidies, subscriptions, and 14 library book sets, with 56 student-run libraries, increased affordable access to reading.”

Additionally, under this initiative to expand affordable access to quality reading material, a new subsidized book sales center was added to seven existing centers, with pop-up book stalls further amplifying outreach. It also expanded access to Chhatra Prabodhan publication through subscription discounts, adding 5,000 new subscribers, including 1,000 fully subsidized through donated funds.



Jnana Prabodhini pop-up book stall

***How can you help?***

*Your \$100 can create enough community libraries to support over 2,500 readers.*

# PERSONALITY DEVELOPMENT PROGRAM

*Focusing on bridging the skill gap and preparing students for self-sustaining careers.*

Gram Prabodhini Vidyalaya is a rural school for students in grades 5 to 12 residing in the Maval region. The school is about a 20-minute drive from the Hinjewadi IT Park in Pune. The school has introduced projects in the field of Agriculture, Animal Husbandry, Nursery, Vermiculture, Bee farming, along with studies. These efforts help students become self-reliant and provide opportunities for self-employment in a rural setting.



Classroom session on reading comprehension



**90 out of 108 students successfully progressed to the next grade with the support of personality development and focused coaching efforts.**

This year, the program was conducted across two semesters. Students completed personality and aptitude surveys, which teachers used to identify gaps to address. Classes were run for English comprehension, algebra, geometry, and essay writing. Interactive activities such as chart-making or *word-train* helped students gain confidence. The school principal provided guidance to students and parents on their academic progress. A total of 11 tests were conducted throughout the year. Finally, a month-long workshop was held for students who were lagging. All this careful nurturing has benefited the students in the long run.



Interactive workshop sessions on learning languages and mathematics



Learning materials and games created by students

# TALENT DEVELOPMENT

*Supporting rural students through education, mentorship, and skill development.*

Jnana Prabodhini's Educational Activity Research Center fosters holistic personality development among rural children through the *Talent Development* project. The program has been active for 7 years in the Rajgad (Velhe) and Panshet regions. The project employs skill-based experiential learning to tackle local issues such as limited employment and inadequate education.



Special intervention - Talent Development program

Currently, the program operates in 46 schools, serving 3,400 students, supported by 50 mentors, and promoting resilience, leadership, and national pride in underserved communities.



**JPF's support with \$5,000 empowered 425 rural students, strengthening their skills and fostering a positive, supportive learning environment.**

The program aims to provide rural children with diverse skills through hands-on learning. A group of 300 students, chosen through mental ability assessments, participates in a special program that fosters ongoing learning and self-improvement. Mentors also gain by sharing expertise, refining their skills, and receiving compensation while aiding community development.



Study tour to Shiv Shrushti, exploring life and legacy of Chhatrapati Shivaji Maharaj

***How can you help?***

*With \$1,000, you can support holistic education for 85 students for a full year.*

**JPF**  
**VOLUNTEER-LED**  
**PROGRAMS**

# TRANSLATION PROJECT

*Making Jnana Prabodhini's rich literature and teaching methods available to a wider audience*

This year marked a significant phase of culmination for the *Translation Team*, as much of the work undertaken in earlier years progressed to its final stages. Three books translated previously—तरंग मनाचे (Ripples of Mind), नियोजन कौशल्य (Planning Skill), and अभ्यासातील स्वावलंबन - भाग ३ (Self-Study Methods - Part 3)—were thoroughly reviewed by subject experts and subsequently published by Chhatra Prabodhan, the publishing house of Jnana Prabodhini. These publications were then proudly showcased at the iconic Pune Book Festival in December 2025.

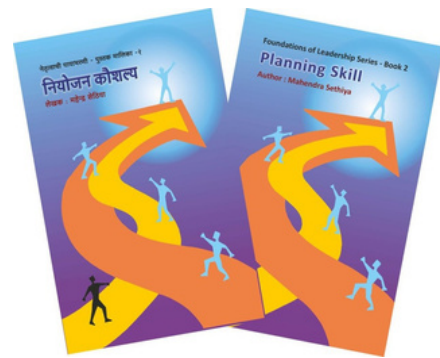
Alongside these major accomplishments, the team continued the translation of one-page and six-page booklets. Additionally, 24 articles were assigned to nine dedicated volunteers for translation during the year. This work remains in progress and will continue into the coming year as part of the team's sustained efforts to make valuable educational resources accessible to a wider audience.



'Self-Study Methods Part-3' - JPF's translated book published by Chhatra Prabodhan in 2025



'Ripples of Mind' and 'Planning Skill' - JPF's translated books published by Chhatra Prabodhan in 2025



## *How can you get involved?*

*Reach out to us at [info@jnanaprabodhinifoundation.org](mailto:info@jnanaprabodhinifoundation.org) to know how to keep your Marathi and English skills sharp while contributing to meaningful work.*

# BEYOND LANGUAGE BARRIERS

*Improving English communication for middle-school students via virtual classrooms run by volunteers worldwide*

JPF's popular program *Beyond Language Barriers* (BLB) resumed for its fifth academic year (2025–26). The program supports students in India in developing English language skills through engaging, interactive sessions. This year's initial sessions covered topics such as travel, festivals, sports, and community service. Students consistently demonstrated eagerness and confidence, reflecting growing comfort with English.

By encouraging active participation and spoken practice, the program helps students internalize the language and begin thinking in English rather than translating from their native language.

Earlier this year, a visiting teacher from Tamil Nadu praised the students of Jnana Prabodhini Navanagar Vidyalaya (JPNV) Nigdi for their strong command of English. He noted that it was remarkable to see students speak English fluently despite Marathi being their medium of instruction. He further observed that students in the BLB program were

surpassing their peers in Tamil Nadu, a state traditionally recognized for strong English proficiency. This is a testament to the hard work of the students at JPNV and the BLB team.



BLB volunteer Shobha Dravid meeting the students



7<sup>th</sup> grade students from the BLB program

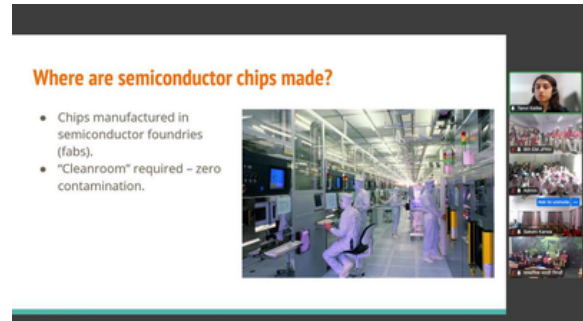
## *How can you get involved?*

*Reach out to us at [info@jnanaprabodhinifoundation.org](mailto:info@jnanaprabodhinifoundation.org) to know how you can help kids build their English language skills!*

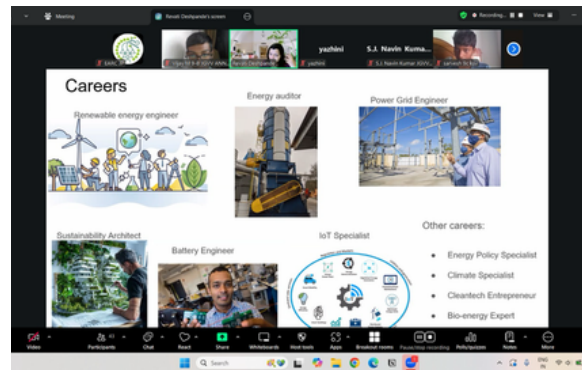
# PRERANA SETU

**Building bridges of motivation through interactive learning sessions that introduce high school students to diverse career opportunities**

Prerana Setu (PS) is an online initiative run jointly by JPF volunteers and Jnana Prabodhini Educational Activity Research Centre in Pune. Prerana Setu builds bridges by connecting students from all over India to experts from various fields. The program provides a platform for high school students (grades 8 and 9) to connect with experts from diverse career fields and work profiles. The program entails a mix of speaker series and interactive sessions, exposing students to diverse career and educational pathways and opportunities in India as well as worldwide. Experts from diverse fields interacted with students during the 2024-25 academic year. Students also presented their takeaways and feedback at the end of each semester.



Tanvi Katke interacting with Jnana Prabodhini Prerana Setu students



Revati Deshpande interacting with All-India Prerana Setu students

Total Themes Covered	6 Entrepreneurship, AI and software engineering, design, civil services, social work, armed forces
Total Sessions Conducted	37
Participating Schools	27
Total Students Reached	275
States Covered	Arunachal Pradesh, Assam, Goa, Karnataka, Madhya Pradesh, Maharashtra, Tamil Nadu

### *How can you get involved?*

*Would you like to share your professional journey with high school students?  
Reach out to us at [info@jnanaprabodhinifoundation.org](mailto:info@jnanaprabodhinifoundation.org)*

# BAAL PRABODHINI

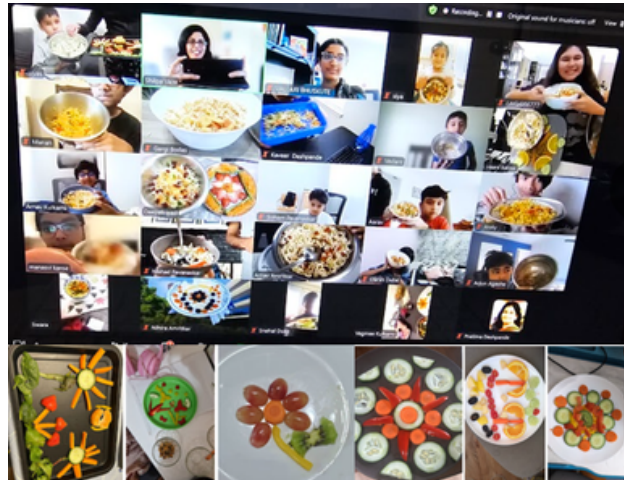
*Introducing Indian heritage to young Marathi children growing up in the USA, Canada, and Europe*

With the collective spirit of our team, students, and parents, *Baal Prabodhini* (BP) proudly celebrated its 4th anniversary, an important milestone that highlights our journey of nurturing confident, curious, and compassionate young minds.

Additionally, this year, four parents and one *Kishor Gat* student have joined BP as volunteers, bringing fresh energy, creativity, and commitment to our efforts, with one of the parents stepping into the role of BP co-lead, taking on a meaningful leadership position that strengthens our mission and supports our expanding initiatives.

This year brought two opportunities for the BP–JPF community to connect. At JPF’s Dallas Melava in July, we shared insights on BP, which led to new enrollments from Dallas. In August, BP partnered with the JP Thane center to organize a *Matrubhumi Pujan* ceremony, attended by 45+ participants.

In 2025, we conducted 43 sessions for Marathi learning and interactive activities geared toward the all-around development of the children. With an average of 28 enrollments in both Spring and Fall of 2025, BP raised over \$8,000, which JPF allocated to JP Harali’s Sponsor a Child initiative, enabling continued access to education for children in rural India.



Children enjoying decorating a salad plate and preparing a fun snack, Bhel



Siblings from Baal Gat and Kishor Gat attending a BP Session from an Airport

“*Baal Prabodhini is such a cherished class that they don’t want to miss it. This is how they attended class this morning after arriving at the airport 😊.*”

## *How can you get involved?*

*Reach out to [baalprabodhini@jnanaprabodhinifoundation.org](mailto:baalprabodhini@jnanaprabodhinifoundation.org) if you wish to enroll your child or volunteer to teach in this program.*

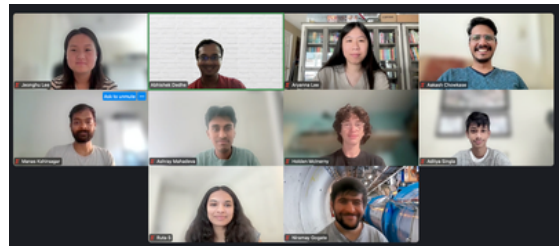
# JPF ANALYTICS



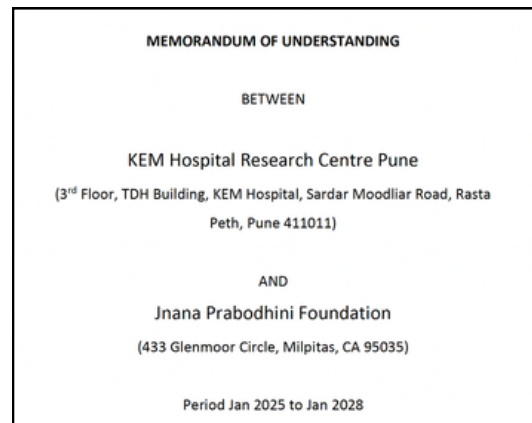
*Promoting evidence-based research, analysis, and policy-making to through a computational social science platform*

JPF Analytics had an action-packed year with over 50 volunteers working to promote data cultures, strengthen research infrastructures, and deepen democratic values. The team achieved multiple milestones, including:

- Education and Outreach:** The team launched its first-ever summer data internship program for 10 high school and college students.
- Public Health Research:** The team signed an MoU with the King Edward Memorial Hospital Research Center (KEM HRC). The team is analyzing data from the Vadu Health and Demographic Surveillance System, located in the Shirur and Haveli blocks of Pune district. This analysis will quantify the region's medical performance and assess its data performance, that is, its ability to accurately record and fill gaps in health-related data.
- Democracy Survey:** The team published a survey report on the 2024 assembly elections and launched a survey in the lead-up to the 2026 Pune Municipal Corporation elections. [Read more on our website!](#)



Student participants of JPF's summer data internship program



MoU between JPF and KEM HRC

## Puneckars firmly support democracy but anxious about eroding political accountability: JPF survey

**Voter Voices**

**Voting, elections and political systems**  
 Strong support: 89%  
 Weak support: 61%

**Parties, candidates & misinformation**  
 Strong support: 83%  
 Current support: 28%

**TOP CIVIC ISSUES**  
 Corruption: 80%, crime: 79%, violence against women/children: 75%, caste: 74%, education: 70%, healthcare: 68%, pollution: 67%, unemployment: 57%

**Democracy, economy & future outlook**  
 Current political situation: 72%  
 Best: 69%  
 Worst: 59%  
 Future: 54%

**OPPOSITION TO AUTOCRACY**  
 Yes: 60%  
 No: 32%

**Survey details**  
 Survey period: Oct-Nov 2024  
 Sample size: 697  
 Language split: 57% Marathi, 43% English

Hindustan Times article about the survey (Click the image to read the web version)

### How can you get involved?

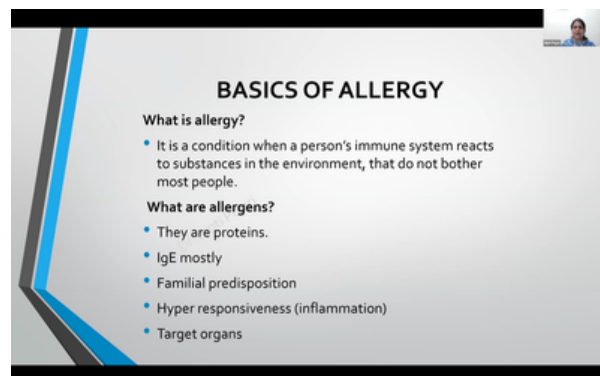
*Are you excited about research and data? Reach out to us at [analytics@jnanaprabodhinifoundation.org](mailto:analytics@jnanaprabodhinifoundation.org)*

# JPF iBRETA

*Improving research, education, training, and awareness in biomedical sciences in India through a biosciences platform*



JPF iBRETA started 2025 with an informative session by Dr. Dipti Pujari, an Allergologist and Immunologist at Deenanath Mangeshkar Hospital, Pune. The session consisted of an introduction to the causative agents of allergy, followed by the detection tests and preventative care options, and ending with available treatment options to tackle allergy.



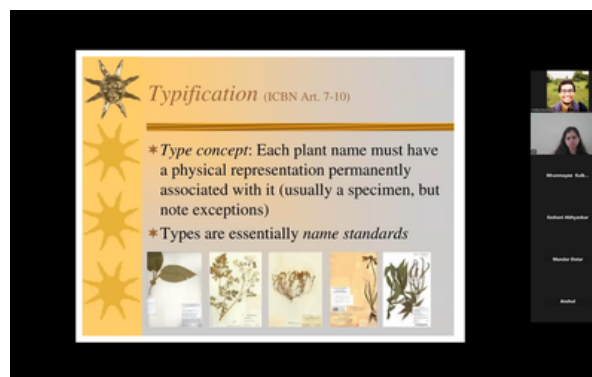
Dr. Dipti Pujari presenting on the Basics of Allergy



Ideation to Implementation Cycle for iBRETA Educational Projects

JPF iBRETA ended the year with a fun session with Dr. Mandar Datar, a Plant Taxonomist at Agharkar Research Institute, Pune. He walked the audience through the journey of plant nomenclature.

The *Education* project team of JPF iBRETA team has been working on developing a video series. The set of 10 short videos is aimed at developing a research attitude and interest in high school students. Email us at the address below to receive a link to the Blueprint of Research!



Dr. Mandar Datar's presentation on Tree Taxonomy

## *How can you get involved?*

*Are you excited about the biosciences? Reach out to us at [biomed@jnanaprabodhinifoundation.org](mailto:biomed@jnanaprabodhinifoundation.org)*

**JPF-SUPPORTED  
PROJECTS  
IN  
WOMEN  
LEADERSHIP**

# REVOLVING CAPITAL

*Developing women entrepreneurs by providing financial support and zero-interest loans through revolving capital*

This microfinance project provided interest-free loans to women with diverse livelihoods and household needs, including agriculture, small businesses, livestock purchases, food enterprises, home construction, and small-scale machinery. By enabling women to take charge of their resources, these loans not only helped families invest in essential assets but also fostered financial independence and the confidence to pursue entrepreneurial and personal growth opportunities.



A woman set up a shop in Velhe's local fair



**JPF's contributions of \$1,000 in 2025 and \$19,000 through 2025 have created a self-sufficient fund. It supported 19 women entrepreneurs in 2025 and 187 in the last 6 years.**

In 2025, loans were distributed across key categories: 3 for housing, 3 for agriculture, 9 for livelihood businesses—including shops, hotels, vegetable vending, grocery, and services—1 for livestock, and 3 for small-scale machinery/enterprise, supporting diverse income generation and household needs across communities.



Barkabai Kale rendering goats

All beneficiaries are making regular repayments, reflecting a growing understanding of financial responsibility and the value of working capital. This success highlights the trust and confidence the community places in *Revolving Capital's* support. Through these efforts, the program supports those in need, fosters resilience, empowers women, and strengthens communities.

***How can you help?***

***Your \$150 can support 1 rural woman to start her own business.***

# NAV DISHA

*Empowering rural women as leaders through a rigorous training program to encourage them to become social change-makers*

Nav Disha Leadership Project focuses on empowering rural women through skill development, confidence building, and leadership training. Throughout the year, regular meetings were held with 25 women representing 25 villages to strengthen initiative-taking and communication skills. Community gatherings played a key role in building solidarity and confidence.



Nav Disha women being each other's cheerleaders at a meetup

Tilgul Meetups were organized in 21 villages with 368 participants, and Navaratri Meetups were conducted in 25 villages with 481 women participating. During these events, women engaged in creative activities, and 168 women underwent hemoglobin testing. Four skill development training sessions on food products, fruit, pickles, and jam and jelly making were conducted to promote financial independence.

**“Through collective gatherings, skill-building, and first-time exposures, rural women gained confidence, strengthening leadership within their villages.**

Three informative sessions further enriched the program, covering natural farming practices, effective community engagement, and confident self-presentation. Participants reflected on their roles as grassroots change-makers and strengthened their communication and leadership abilities.



Nav Disha leaders during their first-ever metro ride

An exposure visit to Solapur and Pune gave 16 women first-time learning experiences, including visits to organizational centers and a metro ride, broadening their horizons and boosting confidence. Through these combined efforts, Nav Disha continues to nurture empowered, self-reliant women leaders at the village level.

***How can you help?***

*You can help transform 1 village through 1 Nav Disha leader with the support of \$160*

# AAROGYA SAKHI - VELHE

*Bridging healthcare gaps, supporting the health of women, children, and the elderly through free care and awareness camps*

Under *Aarogya Sakhi*, 15 trained women health workers provided preventive and primary health services in remote villages in Velhe and Bhor talukas with a focus on women, children, and the elderly. They supported 13 medical doctors in organizing health camps, awareness sessions, and basic medical testing. During the year, the programme intensified its focus on haemoglobin (Hb) testing in response to increasing anaemia severity, expanding both outreach and age coverage to include young children.



Menstrual hygiene awareness session



**JPF provided \$13,000 to support Aarogya Sakhis, who helped 3,827 patients in 143 camps conducted in 2025.**

Camp name	Beneficiaries	Camps
Pregnant women	40	3
Children	297	8
Dental	171	23
Eye check-up	500	14
HPV	160	6
Hb testing	1,590	16
Menstrual health	370	21
Nutrition	399	27
Deworming	300	25
<b>Total</b>	<b>3,827</b>	<b>143</b>



Elderly patients received support for eye checkups and cataract operations

A total of 143 health camps were conducted, benefiting 3,827 individuals, marking a significant increase from 77 camps and 1,800 beneficiaries in the previous year.

### *How can you help?*

*Your \$200 gift can support one health check-up camp for women in rural villages.*

# AAROGYA SAKHI - HARALI

*Providing holistic healthcare through medical, mental, and social support to chronically ill patients and their families*

**Palliative Care:** The project aims to provide holistic, home-based support to individuals with chronic illnesses, improving their quality of life while supporting caregivers and families. Approximately 45 patients were identified from 6 villages around Harali. A multidisciplinary team comprising a doctor, a nursing assistant, a family counsellor, and a social worker conducted monthly home visits to monitor patients' physical and mental health, assess the caregiver's well-being, and understand the family environment. A caregivers' meet was organised in Harali in November. Assistive devices provided included 4 tilting beds, 5 wheelchairs, 8 walkers, and 10 walking sticks. Plans are underway to expand coverage to additional villages.



Patient consulted under the palliative care initiative



**A \$5,000 contribution from Akshaybhasha supported 45 chronically ill patients and enabled health improvement sessions for over 500 women.**

**Anaemia Alleviation Initiative:** With funding support from Aksharbhasha, JPF, and Dr. Shubhangi Thakur, this initiative aims to improve women's health and nutrition through community-based awareness and preventive interventions, focusing on anaemia, reproductive health, hygiene, and healthy dietary practices. In 2025, monthly village-level meetings were conducted across five selected villages, reaching over 500 women. The activities were facilitated by five Aarogya Sakhis, who conducted anaemia awareness sessions, nutrition education, menstrual and personal hygiene discussions, deworming initiatives, regular blood testing camps, interactive health sessions, recipe demonstrations, and community-based events conducted throughout the year.



Blood tests being conducted for women

# HEALTH IMPROVEMENT

*Improving holistic health and promoting community leadership among Bidi (handmade cigarettes) rolling women in Solapur*

**Health Initiative:** This program addresses the health-related occupational hazards faced by bidi-rolling women in Solapur city. In 2025, over 650 women from 10 localities met six days a week for 45-minute sessions, centered on Pranayama (coherent breathing) practices such as Anulom-Vilom, Kapalbhati, Surya Namaskar, and more.

In addition to the operational costs, JPF provided a **two-wheeler** for regular visits to all operational areas and monitoring activities. Given the scattered nature of the coverage area, the vehicle has improved mobility and time management.



Pranayam during the annual program



Vehicle added to the program



**A JPF contribution of \$12,500 helped 650 women, leading to improvements in physical and mental health.**

**Community Leadership:** This program focuses on supporting women in their roles as community leaders. Through this, women developed and led major activities, including Ashadhi Ekadashi bhajans (1,000 participants), a Raksha Bandhan program with police, and a Women’s Fellowship Meet (600 participants). These events strengthened self-confidence and



Raksha-Bandhan event with police

organizational skills, and culminated in an event featuring 56 group leaders and 9 regional leaders making public annual resolutions for the year to come.

*How can you help?*

*With \$300, you can help expand the program to one new location for 15 women workers.*

# ALTERNATE EMPLOYMENT

*Developing alternative skills among bidi-rolling women to move away from bidi rolling activities*

## **Skill Development for Safer Livelihoods**

**(sewing, bag making):** Women working in the bidi-rolling industry face serious health risks. To support safer and more sustainable livelihoods, Jnana Prabodhini's Solapur Center provides alternative skill development opportunities that are easier to learn and can generate independent income. The initiative focuses on training women in sewing, tailoring, and bag-making, enabling their transition from hazardous tobacco work to safer forms of livelihood.



A woman printing cloth bags at home



**In 2025, JPF's \$3,200 support helped three women leave hazardous bidi work and transition to safer, income-generating livelihoods.**

This initiative builds on a multi-year effort to reduce women's dependence on hazardous tobacco-related work. In 2020, the Solapur Center launched a program aimed at providing women in the bidi industry with sustainable livelihood options. In 2022, the *Mukti Campaign* was introduced to further support alternate employment, health awareness, and skill development in Solapur.



Women engaged in bag-making independently after gaining skills

Since then, the initiative has gradually expanded its reach. 13 women benefited from the program through bag making in 2021, 5 in 2022, and 3 in 2025. In total, 21 women have been supported over the past three years, helping them move toward safer and home-based employment and more stable income opportunities.

### *How can you help?*

*With a \$1,000 gift, you can help one woman pursue alternate employment, helping to create a sustainable income source and improve her family's quality of life.*

# SKILL DEVELOPMENT

*Providing skill development training to promote entrepreneurship and employment among rural women*

Skill Development projects provide a trustworthy ecosystem for women to learn various skills, set up businesses, and sell products to earn income. This promotes self-employment and financial independence, which are crucial for women who would otherwise be dependent on agriculture and farm labor. The key aspect of these trainings is that women can start their own small-scale



Shivapur(Pune): Tailoring workshop

business from home without compromising their family responsibilities. The training camps/sessions are held at 5 centers in Pune (Nasrapur, Shivapur, Velhe, Pasali, Ambvane) and the Solapur region.



**With the support of \$5,000 in 2025, 46 training workshops were held in 5 different regions, supporting 300 rural women.**

Some of the trainings provided included parlor and tailoring workshops, along with sessions on chocolate making and purse/pouch making. Now, there is a repository of trainer connections developed for over 50 skills that can create a small business in rural India.

In 2025, 46 training workshops were held, benefitting more than 300 women, with many participating in more than one type of



Solapur: Sewing classes for skill development

training. Total sales from products made by the trained women exceeded \$ 4,500. Over the past 6 years, many women have used the skills learned to start their own small ventures.

## *How can you help?*

*Your \$100 gift can support one camp at a Jnana Prabodhini Training Center, benefiting 10-15 participants per session.*

# INITIATIVE FOR SEPARATED, WIDOWED, AND DIVORCED WOMEN

*Creating awareness against domestic violence and helping women complete documentation for government benefits*

This project aims to support separated and widowed rural women by providing financial and moral support to foster their independence, confidence, and dignity. Our support aims at helping these women complete the documentation to access government benefits and by providing capital to start their own venture or address their pressing needs.



Financial assistance was provided to buy a cow

**Documentation:** This year, we worked closely with 11 women, facilitating access to various government and social welfare schemes, including the Shraavan Bal Scheme, Sanjay Gandhi Niradhar Scheme, and Kutumb Benefit Scheme, as well as assistance with obtaining ration cards and other essential documents.



**Initially hesitant women are now more open to discussing financial and family issues, reflecting the trust built through sustained support.**

**Capital Disbursement:** Financial assistance, in the form of loan support, was extended to 6 women (total value approx. \$900) to purchase cows and sewing machines. Community gatherings and home visits played a key role in extending the reach of the project. Direct support at the doorstep and information sharing helped gain confidence and enabled them to overcome their challenges.



A widowed woman was provided with financial support to repair the house

*How can you help?*

*With \$100, you can help one woman to complete her documentation and start over!*

# NAVI OOMED

## Supporting legal identity for newly married rural women

14 trained women *sakhis* support newly married women in rural Velhe by facilitating the issuance of marriage certificates and assisting with name updates on key identity documents such as Aadhaar and ration cards. Timely documentation plays a critical role in protecting women from fraud or disputes after getting married and is essential for accessing formal services, including opening bank accounts in their own name. As part of the initiative, awareness sessions were conducted in 13 villages, resulting in 45 applications for documents.



Awareness session for women participants regarding marriage registration and document updation



**A \$2,000 contribution enabled legal identity awareness across 13 villages, resulting in 14 rural women obtaining or updating essential identity documents.**

To date, we have completed 14 document updates, including 10 marriage registrations and certificates, 2 ration cards, and 2 Aadhaar card updates, with remaining applications currently in process. The project also generated positive ripple effects, with 5 newly married women independently initiating marriage registration in villages where awareness camps were conducted. Improved documentation further enabled women to apply for and access benefits under local schemes such as ‘Ladki Bahin.’



Awareness session for women participants regarding marriage registration and document updation

### *How can you help?*

*Your support can help rural women secure legal identity and get access to essential services.*

**JPF-SUPPORTED  
PROJECTS  
IN  
RURAL  
INFRASTRUCTURE  
DEVELOPMENT**

# HEALTH CENTRE VELHE

*Expanding access to quality healthcare in villages near Pune city*

Access to quality healthcare remains a major challenge in the remote Velhe region of the Western Ghats, where villagers often travel long distances for basic treatment. For years, Jnana Prabodhini has supported rural health through initiatives such as *Aarogya Sakhi*, and the new Manorama Jeste Rural Health Center will provide infrastructure to strengthen and expand these efforts.



JPF Treasurer Vidya Hardikar Sapre as a guest for the groundbreaking ceremony



**After the planned completion by the end of 2026, the facility is expected to support 55,000 people from over 80 villages through visiting doctors, telemedicine, and a testing facility.**

The 4,000 sq. ft. health center is being developed in Ambavne, near Velhe, to serve the surrounding villages and provide regular medical services. The facility will include consultation rooms for general medicine, gynecology, pediatrics, dentistry, and ophthalmology, along with a diagnostic room, observation beds, and training spaces for community health programs.

In 2025, the team completed land acquisition, site survey, formation of a project management committee, and finalization of architectural plans with inputs from medical experts. The project reached a key milestone with the groundbreaking ceremony for the health center in October 2025, completing the foundation work by December.



Team present for the groundbreaking ceremony



Subhashrao Deshpande kicked off foundation concreting for the health center

# WATER STORAGE DEVELOPMENT

## *Constructing ferrocement tanks in remote villages in Maharashtra*

Remote villages in Maharashtra often face water supply challenges. Limited access and inadequate storage facilities force villagers to travel several miles to satisfy their basic water needs. Jnana Prabodhini, with financial support from JPF, has been constructing water storage tanks to address this problem. In 2025, three tanks were successfully constructed in the remote villages of Nashik, significantly improving water availability.



Water tank construction in Kahandolpada



**In 2025, JPF raised \$10,000 for wells and water storage tanks in remote villages in Maharashtra. Tanks were built in Aadgaon, Kahandolpada, and Tondwal in Nashik district.**

The village of Aadgaon hosts a population of 530 people and 200 livestock, while Tondwal has a population of 150 people and 100 livestock. These villages face a severe water crisis due to insufficient storage facilities and must buy water from private tankers. With the help of JPF, a 20,000-liter water storage tank has been constructed in each of these villages to meet their basic water needs.



Construction of Water tank in Aadgaon

Though Kahandolpada village has a smaller population of 40-50 people with 30 livestock, this village was chosen due to its geographic challenges. It is surrounded by mountains and faces severe shortages in the summer and also during the monsoon due to a lack of electricity. Considering these challenges, we constructed a 15,000-liter water storage tank in Kahandolpada.



Water tank in Tondwal

### *How can you help?*

*A donation of \$3,000 can help construct 1 ferrocement tank of 6,000-gallon capacity for a village of 200-250 families.*

# SOLAR PANEL INSTALLATION

*Improving energy access and sustainability in remote rural areas*

In September, 43 high-efficiency (590W) solar panels with a total capacity of 25.4 kW were installed at the Girls' Hostel and Leadership Development Center in Velhe, a region frequently impacted by power and network disruptions. Located in a remote, hilly terrain with limited infrastructure, the area often faces prolonged outages that affect students' safety, digital access, and daily operations. During monsoons and adverse weather conditions, these challenges intensify, disrupting education and essential services.



Solar panels installed at the girls' hostel in Velhe



**In 2025, the solar system will support 50 residential hostel students, over 100 students taking computer classes, and over 4,000 students attending camps through the Leadership Development Center.**

Solar System is supporting the computer center at Velhe, the education of girls in Velhe hostel, various health and training sessions for rural women, and virtual sessions conducted at the Leadership Development Center. It provides a reliable, sustainable electricity supply, supporting critical operations and advancing world-class infrastructure in a rural area where dependable power is scarce.



Solar panels ensuring uninterrupted education for girls in the Velhe hostel

## *How can you help?*

*With \$1,000, you can support two solar panels, ensuring a reliable and sustainable power supply for various educational and healthcare projects.*

# HARALI SCHOOL BUILDING MAINTENANCE

*Renovating the school campus to provide better service to a larger number of beneficiaries*

Work in Harali began in 1995 and has grown significantly over time. The existing infrastructure no longer meets current needs for office space and amenities, leading to both new construction and extensive reorganization and renovation across the campus.

Work commenced in May 2025, owing to critical repairs that needed to be completed before the school term began in June. The remainder of the work commenced again after the Diwali break and was completed by December 2025.



Essential furniture for skill training workshops



**With a contribution of \$5,000, we addressed critical infrastructure and educational needs at Harali. We sincerely thank LyondellBasell for their valuable support in enabling this initiative.**

We completed the following work:

- Internal and external painting of old buildings
- Repairs to the drainage system
- Internal road hardening and parking
- Essential furniture in offices and stores
- Repairs to the electrical power distribution network
- Maintenance of old vehicles

The campus renovation resulted in smoother functioning of various departments. New office spaces meant an increase in staff as well as more training and workshops. Upgrading of the electrical network has reduced the incidence of power outages and failures.



Internal painting of an office space



New parking infrastructure for a science bus and other vehicles

# LIBRARY AT HARALI

*Renovating the library through participatory design at Harali for a better reading experience*

We recently renovated the school library at Jnana Prabodhini Harali based on the design plan proposed by the 7th-grade students. We decided to renovate the library because of heavy furniture, suboptimal lighting and ventilation, and the need to expand the book collection to better suit students.



Inauguration of the library at Harali



**The renovation was carried out with a \$3,400 support from The Austin Maharashtra Mandal, USA, facilitated by JPF.**

**Grade 7 students designed the library with the help of Kalyani Deshpande**, a design thinking facilitator, followed the design thinking process, learning the basics of design, conducting surveys, studying the layouts, and understanding the challenges of the existing library setup.



The library was renovated to create flexible seating arrangements and ensure sufficient open space. The renovated library was **inaugurated on the occasion of Marathi Language Day by historian and author Shri. Pranav Patil** (alumnus Jnana Prabodhini Nigdi). The renovated school library will significantly help foster reading habits among over 500 students, along with more than 1,000 students from schools around and other regional initiatives.



*How can you help?*

*You could donate books suitable for rural students.*

# CYCLES FOR GIRL STUDENTS IN SALUMBRE

The FemmeVoice, a nonprofit founded by high school students, supported underprivileged girls in Salumbre, near Pune. It addressed the challenge of long daily distances that many girls must walk to attend school, creating safety risks and hindering consistent education.



Bicycles gifted to girl students at Salumbre

\$420 raised by **the FemmeVoice were used to provide bicycles to 8 deserving students** at the rural campus of Salumbre. JPF coordinated with local staff to identify beneficiaries, procure the bicycles, and manage distribution. Within three months, the bicycles were gifted, offering safe and reliable transportation. This initiative improved school attendance, enhanced safety, and enabled the girls to pursue their studies and aspirations with greater confidence.

# RENOVATION AT SHIVAPUR

## *Improving sanitation at Shivapur's Vocational Training Center*

The toilet facilities at the Vocational Training Center in Shivapur were in poor condition and required urgent attention. When external support was difficult to secure, JPF stepped in to enable reconstruction of the aging structure.



Previous condition and current work in progress

The new facility will include 2 bathrooms, 5 toilets, 4 urinals, and 4 washbasins. Construction began in November 2025, with the old structure fully demolished. Once completed in mid-2026, it will provide essential sanitation for over 100 students and 15 staff members daily, and support more than 250 students as the center expands its programs.



**JNANA  
PRABODHINI  
GLOBAL  
NETWORK**

# JNANA PRABODHINI GLOBAL NETWORK

*Building a global Jnana Prabodhini community*

This year, our community came together through **135 events**, **engaging over 1,197 members** and strengthening bonds across our global network. These mostly informal gatherings created space for heartfelt conversations and shared experiences, connecting members from the San Francisco Bay Area, Connecticut, Washington DC, Texas, Boston, Colorado, Pune, and beyond. Guided by JPF's commitment to building a vibrant, compassionate global community that uplifts its members while contributing meaningfully to society, our global networking initiative grew by 16% over the last year. Today, we proudly connect 1,777 members across 12 regions and 4 continents.

Region	Members
United States (7 Chapters)	<b>1,303</b>
Canada	<b>67</b>
Europe	<b>191</b>
United Kingdom	<b>120</b>
Middle East	<b>40</b>
Oceania (Australia/NZ)	<b>56</b>
<b>Total</b>	<b>1,777</b>

**Other initiatives (in numbers)**  
Student Support Group (614), Prabodhini Abroad (163)



New England Meetup - July, 2025

2025 marked a major milestone for our **Student Support initiative**. Our WhatsApp community now connects 614 students and mentors across diverse disciplines, creating a vibrant space for guidance, support, and shared learning. In addition, the **Career Forum** hosted two global sessions that engaged 81 students and offered valuable career insights and meaningful networking opportunities.

This year, Student Support and Career Forum launched two new initiatives, **MentorConnect** and **The Writing Group**. MentorConnect pairs students and early-career professionals with experienced mentors in their respective fields, while The Writing Group fosters accountability and provides dedicated, supportive time for participants to focus on writing or other personal projects.

In September 2025, 13 members of the JPF Consultative Committee convened in Burke, VA, for the **annual retreat** in a hybrid format. The gathering provided a meaningful space for reflection, strategic planning, and alignment around JPF's vision for the next five years. The retreat concluded with an in-person interaction with Dr. Vinod Prakash of IDRF, reinforcing the partnership between the two organizations.



JPF Consultative Committee retreat

In November 2025, JPF partnered with Pune Zilla Parishad and IUCAA to coordinate the San Francisco Bay Area leg of a U.S. **educational tour for 25 exceptional 6th- and 7th-grade students from underserved communities**. Over three days of in-person programming and weeks of preparation, 30 JPF volunteers worked closely with the tour organizers to curate a meaningful and inspiring itinerary. Students explored museums, the California Academy of Sciences, the Apple and Google campuses, Stanford University, and several iconic San Francisco landmarks, broadening their horizons through firsthand exposure to learning, innovation, and possibility.



Group photos with volunteers and the group visiting California from India



If you have any questions about volunteering opportunities or joining Jnana Prabodhini Global Network, please call +1(317)560-6098 / Email: [info@jnanaprabodhinifoundation.org](mailto:info@jnanaprabodhinifoundation.org)

**Collaborative Events:** Collaboration is central to Jnana Prabodhini Foundation’s work. Our volunteers work closely with community organizations, donors, and partners to build lasting relationships based on shared purpose and mutual learning.

In 2025, the presidents of **Bruhan Maharashtra Mandal**, Prasad Panwalkar, and **Calgary Marathi Mandal**, Swati Girap, visited the Jnana Prabodhini Pune campus to learn more about our programs and impact. JPF also connected with the Marathi diaspora through outreach booths at the **Dallas–Fort Worth Marathi Mandal Maitri Melava** and **Connecticut Marathi Mandal** events.

JPF collaborated with **Prayog**, a theater group in the Bay Area, to host a joint fundraising event and strengthened its partnership with **India Development and Relief Fund** by supporting a project through a matching-donation initiative. In addition, JPF joined hands with **Bruhan Maharashtra Mandal** to raise funds for flood relief efforts in Marathwada.

**Site Visits:** Field engagement remains a key part of JPF’s collaborative approach. JPF’s Outreach and Engagement team **facilitated six visits for donors and well-wishers to project sites** in Velhe, Shivapur, Solapur, and Harali, including alumni from Nutan Marathi Vidyalyaya. In addition, six JPF officials and volunteers visited multiple projects.



JPF well-wishers visiting the programs they have supported over the years

Among these was Anand Shala (School of Joy), where two JPF-supported school spaces were inaugurated by JPF representatives. Our advisor, Dr. Shamkant Navathe, visited our Pune campus in December 2025. **JPF encourages its volunteers, donors, and well-wishers to visit project sites and meet project leaders in person.** Reach out to us at [info@jnanaprabodhinifoundation.org](mailto:info@jnanaprabodhinifoundation.org) to plan a site visit in India.

# JPF FINANCIALS

## *Income Statement*

<b>Income - Donations Cash</b>	<b>\$ 625,200</b>
Operational Expenses	\$ 3,891
Program Expenses	\$ 421,770
<b>Expenses Total</b>	<b>\$ 425,661</b>
<b>Income Statement (Surplus/Deficit)</b>	<b>\$ 199,539</b>

## *Balance Sheet*

Opening Balance	\$ 155,020
Income Statement (Surplus/Deficit)	\$ 199,539
Closing Balance	\$ 354,559

## *Program Expenses*

<b>Program</b>	<b>Cause</b>	<b>Amount (\$)</b>	<b>Allocation (\$)</b>
Sponsor A Child Endowment Fund	Education	\$ 101,000	
Sponsor A Child	Education	\$74,000	
Anand Ghar (House of Joy)	Education	\$ 25,000	
Anand Shala (School of Joy)	Education	\$ 16,500	<b>Education</b>
Festival of Reading	Education	\$ 18,000	<b>\$ 249,500</b>
Wonderquest Library	Education	\$ 5,000	
Personality and Talent Development	Education	\$ 10,000	
Revolving Capital	Women Leadership	\$ 1,000	
Nav Disha	Women Leadership	\$ 3,500	
Aarogya Sakhi	Women Leadership	\$ 18,000	
Health Improvement Solapur	Women Leadership	\$ 12,500	<b>Women Leadership</b>
Alternate Employment	Women Leadership	\$ 3,200	<b>\$ 46,620</b>
Skill Development	Women Leadership	\$ 5,000	
Navi Oomed	Women Leadership	\$ 2,000	
Initiative for Separated Women	Women Leadership	\$ 1,000	
Bicycles at Salumbre	Women Leadership	\$ 420	
Health Center - Velhe	Rural Infrastructure	\$ 50,000	
Renovation at Shivapur VTC	Rural Infrastructure	\$ 20,000	<b>Rural Infrastructure</b>
Watershed Management	Rural Infrastructure	\$ 10,000	<b>Development</b>
Harali School Building Renovation	Rural Infrastructure	\$ 10,000	<b>\$ 102,900</b>
Solar Panel Installation	Rural Infrastructure	\$ 9,500	
Harali School Library	Rural Infrastructure	\$ 3,400	
Solapur and Marathwada Flood Relief	Disaster Management	\$22,750	<b>Disaster Mgmt</b>
			<b>\$22,750</b>
<b>Total</b>		<b>\$ 421,770</b>	<b>\$421,770</b>

# DONATION PARTNERS

We are grateful to the following organizations that donated money or matched employee donations to JPF:

- Abbott Labs
- Abbvie Inc.
- Adobe Inc.
- Agilent
- AMD
- American Express
- Analog Devices Foundation
- Apple
- ASML
- Astrazeneca
- Bank Of America
- Charities Aid Foundation
- Cisco
- Coupa Software
- DAF Giving
- Delta Dental
- Discover Financial
- Docusign
- Dolby
- Ebay, Inc.
- Emerson
- Exelon
- Fidelity
- Gilead
- Google
- Guidewire
- Humana
- IBM
- Intel Foundation
- Intuitive Foundation
- JP Morgan Chase
- KLA
- Lam Research
- Lenovo
- Lyondell Basell
- Marvell Technology
- Mastercard
- Microsoft
- Morgan Stanley
- MUFG Bank, Ltd.
- Netapp
- Netflix
- Nvidia
- Okta
- ON Semiconductor
- Oracle
- Pagerduty
- Palo Alto Networks
- Pfizer
- Pinterest
- Playstation Cares
- Pure Storage
- RBC
- Roche Molecular Systems
- Salesforce
- SAP
- Synopsys Inc.
- T-Mobile
- Takeda Pharma
- Vanguard
- Veeva
- Visa
- Workday
- Workhuman
- Yahoo
- Zoom
- ZT Systems

**You can double the impact of your donations by contributing through your company's Corporate Matching Program and registering us with new companies.**

# FACEBOOK FUNDRAISERS

A shoutout to our friends who organized Facebook fundraisers for JPF:

- Aakash Chowkase
- Parag Joshi
- Pallavi Pawar
- Prathamesh Rege

***Are you interested in supporting JPF and making a difference in the lives of our brethren? Consider becoming a patron this year by pledging a Facebook fundraiser on your special occasion. We appreciate your support!***

# ACKNOWLEDGEMENTS

Our success would not have been possible without the support of our dedicated volunteers, passionate team leaders, generous donors, enthusiastic supporters, knowledgeable advisors, and caring well-wishers. We extend our heartfelt thanks to everyone who has contributed to our mission and helped us make a difference in the lives of our community members.

**Sincere gratitude to our individual donors, corporate donors, and fundraising superstars.**

**Shout out to our dedicated team of volunteers and team leaders for their contributions and accomplishments for JPF!**

**Thanks to our advisors for their guidance, support, and encouragement.**

**Thank  
you!**

# VOLUNTEER WITH JPF

Join our global community of over 2,000 members and make a positive impact on the world! Together, we can work toward creating a better future for everyone.



## **Teams:**

1. Programs Teams
2. Fundraising Team
3. Outreach and Engagement Team
4. Global Network Team
5. Field Coordination Team

## **Commitment:**

Just 1-2 hours/week

## **Opportunities:**

- Lead a project (education, health, women leadership, rural development)
- Contribute to a project (translation work, data analytics, career guidance, English teaching, iBRETA)
- Write a grant (corporate grants, educational grants)
- Handle outreach activities (content creation, website maintenance, eCommerce platform development)
- Design and host fundraising events
- Be a JPF ambassador in your network and support various outreach activities

## **Impact:**

- Opportunity to change and positively impact the lives of many individuals
- Motivating students through virtual volunteering opportunities
- Experience of working with volunteers from diverse backgrounds
- Volunteer hour donations creating a dual impact



JNANA PRABODHINI  
FOUNDATION

433 Glenmoor Circle,  
Milpitas, CA 95035

<https://jnana Prabodhini Foundation.org>

