



# JNANA PRABODHINI FOUNDATION

QUARTERLY NEWSLETTER

YEAR 6 ISSUE 1

APRIL 2025

## In this issue

### President's Desk

### Program Updates

Festival of Reading  
Community  
Innovation

### Volunteer -Led Programs

Prerana Setu  
IBRETA

### JPGN

## JPF Podcasts

Listen to inspiring stories  
from our different projects!



[Donate to JPF](#)

## From the President's Desk

Hello JPF Family,

As we begin 2025, I'm excited to share key highlights from JPF's first quarter. This quarter marked a thoughtful and strategic start, with the team aligning on three core priorities: expanding leadership committees, initiating infrastructure projects, and strengthening support for students and early-career professionals.

Following JPF's fifth anniversary last year, it's time to expand the current JPF framework. With many dedicated volunteers ready to step into leadership roles, we plan to formalize and expand these opportunities in the coming months. Alongside our ongoing initiatives, we are preparing to launch new infrastructure projects focused on education and healthcare. These efforts aim to create a long-term, sustainable impact.

Lastly, through Jnana Prabodhini Global Network, we're committed to supporting students and young professionals through mentorship and community-building. With today's challenging market, your guidance can make a meaningful difference. If you're interested in mentoring, we warmly invite you to get involved through our Career Forum.

Thank you for your continued support. Together, we're shaping a stronger, more impactful 2025.

Thanks,  
Pranav Kulkarni  
President  
Jnana Prabodhini Foundation

# Program Updates

## Festival of Reading

**Teacher Training Residential Camp:** A residential training camp was organized from January 10 - 12, 2025 at Velhe, bringing together selected teachers from different districts of Maharashtra. A total of 57 teachers in the camp, engaging in various enriching sessions. These included: “Understanding the Education System. “Importance of Literary Circles” “Reading

Skills” and an inspiring session on “Learning from nature”. The camp proved to be a motivational and enlightening experience for all participants, equipping them with the tools to become more effective change-makers in their respective schools and communities.



Teachers in residential camp at Velhe

## Community Innovation Center

After investing in essential resources and infrastructure last year, the Innovation Center at Jnana Prabodhini Nigdi - dedicated to nurturing grassroots innovators and entrepreneurs from rural areas - launched Design Thinking workshops and Innovator/Entrepreneur Meets in 2025. These initiatives aimed to identify potential incubatees and build innovation capacity. So far, 514 participants, including rural youth, women, and farmers from Bhor, Maval, and Harali, have engaged in Design Thinking workshops focused on identifying local problems, empathizing with customers,



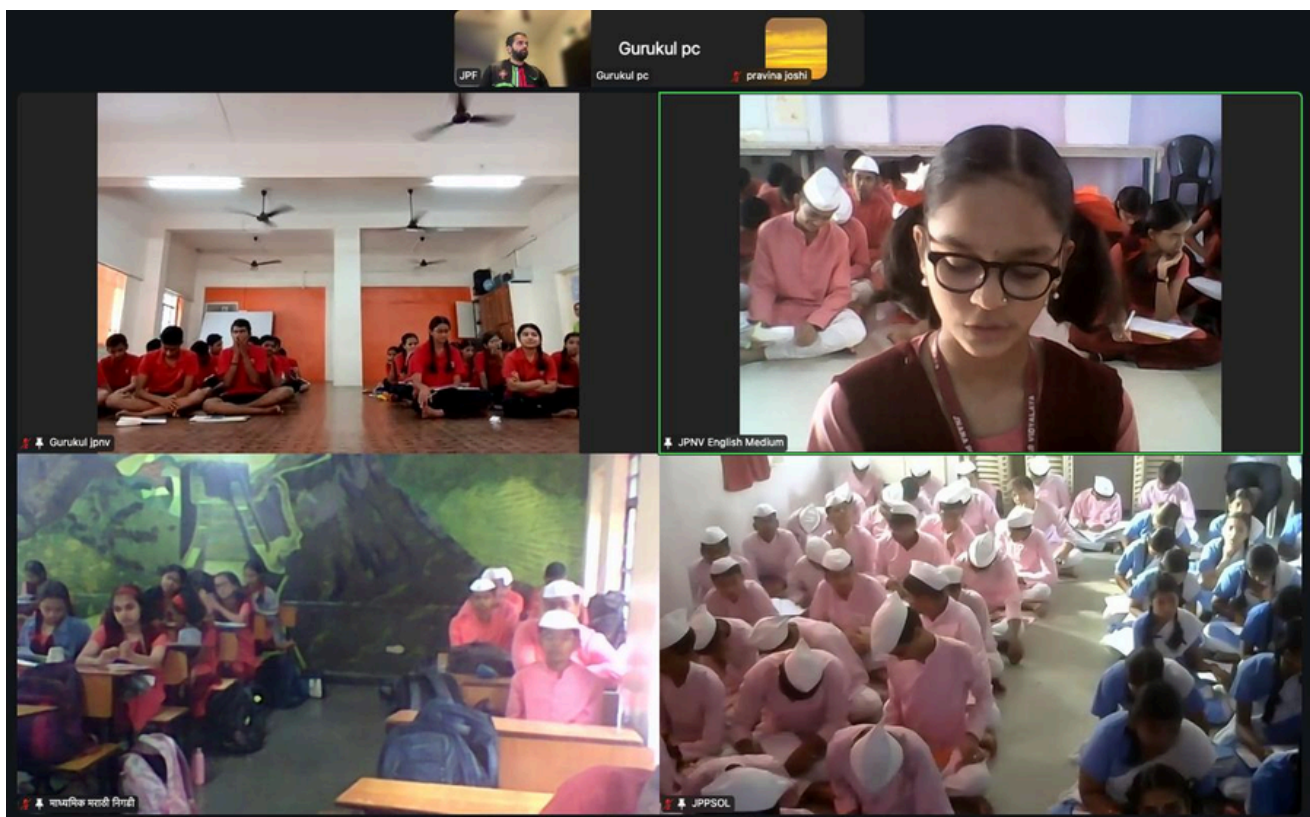
Design Thinking workshop for rural youth in Bhor

and developing practical solutions. Also, eight promising incubatees have been selected for further guidance and support. With continued backing from JPF, the center remains committed to nurture rural innovators.

## Prerana Setu

Team Prerana Setu concluded the 2024–2025 session, where around 20 experts from diverse careers inspired over 150 students across four JP schools. The final session concluded in February, and the team received overwhelmingly positive feedback from students and teachers alike. Through engaging interactions, students explored a wide range of fields—from biotechnology, law, and AI to film, healthcare, and climate and expressed growing interest in areas like criminology, supply chain technologies, food science, music composing, and business.

The impact went well beyond the sessions. One student picked up a book by Achyut Godbole after the AI talk, another dove into black holes and stars ahead of the space session, and one even reconnected with a speaker for further direction. As one teacher noted, “These sessions spark curiosity—students revisit topics and return with deeper questions.” The biggest win? Students now feel empowered to explore, ask, and dream—some even hoping to return as speakers in the future.



JP Solapur and JP Nigdi students sharing their feedback at the Prerana Setu concluding session

## IBRETA - Initiative for Biosciences Research, Education, Training, and Awareness

As part of its continued efforts to raise awareness about lifestyle diseases, Team IBRETA hosted an engaging webinar titled 'Unmasking Allergies – From Triggers to Treatment'.

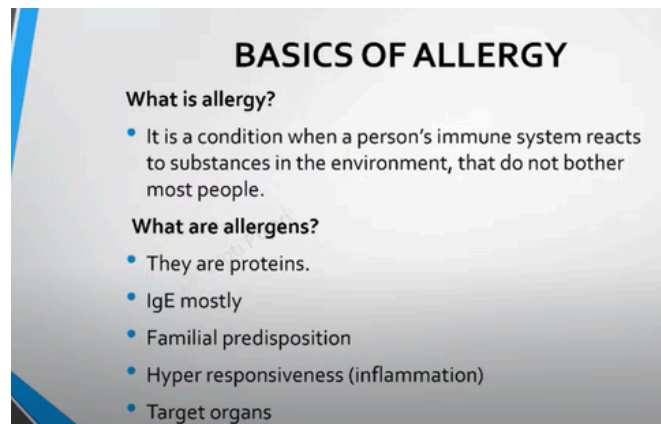
The session featured Dr. Dipti Pujari, an MD in Pediatrics with over 14 years of clinical experience, including three years as an allergy

consultant at Deenanath Mangeshkar Hospital. Dr. Pujari is also certified in allergy and immunology by the European Academy of Allergy and Clinical Immunology. The session offered a comprehensive overview of allergies - from understanding what they

are to how they can be diagnosed, managed, and even prevented. It began by explaining the basics of allergic reactions and the biological pathways involved, followed by a deep dive into why allergies are on the rise and which organs are typically affected. Dr. Pujari covered common allergens and clarified the difference between food allergies and intolerances.

The session also covered conditions like asthma, allergic rhinitis, conjunctivitis, urticaria, and contact dermatitis, along with various diagnostic tools such as prick tests, patch tests, and advanced methods like Component Resolved Diagnosis (CRD).

Management strategies focused on allergen avoidance, medical treatments, and immunotherapy, with special emphasis on both primary and secondary prevention. The session concluded with an engaging Q&A, reinforcing the importance of awareness and proactive care in tackling allergies effectively.



**BASICS OF ALLERGY**

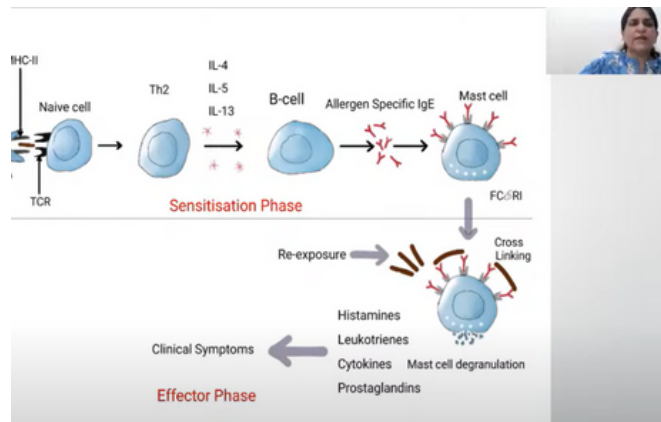
**What is allergy?**

- It is a condition when a person's immune system reacts to substances in the environment, that do not bother most people.

**What are allergens?**

- They are proteins.
- IgE mostly
- Familial predisposition
- Hyper responsiveness (inflammation)
- Target organs

Session covered the basics of allergies



Dr.Pujari explaining the different allergic pathways



# Jnana Prabodhini Global Network

*Over 250 JPF Members Connect in an Inspiring Start to 2025*

Q1 2025 started on a high note with JPF Treasurer Vidya Hardikar Sapre continuing her visits across Maharashtra. During her journey through Pune, Solapur, Harali, and Southern Maharashtra, Vidya Tai met with more than 150 JPF members, donors, and supporters. These visits provided valuable insights into the challenges faced, as she engaged directly with the passionate volunteers driving these projects forward. Vidya Tai also visited many JPF volunteers' homes to meet their families, fostering stronger bonds within the community.

In February, Aakash Chowkase toured the Bay Area, where he met with 14 JPF volunteers and well-wishers. Together with Swanand Joshi and Amruta Kulkarni, Aakash hosted a small gathering, where everyone enjoyed engaging and heartfelt conversations.

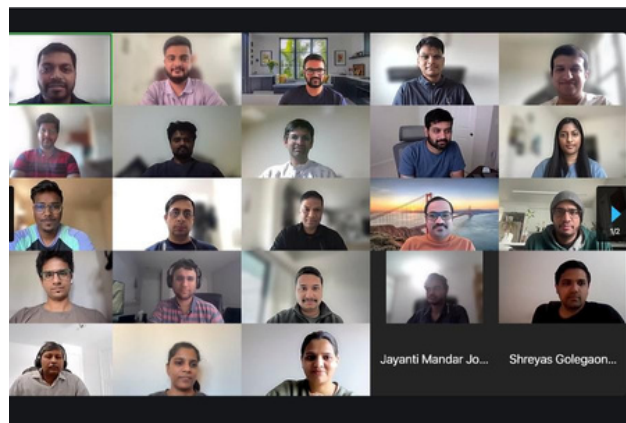
The JPF Career Forum launched a new initiative called 'MentorConnect,' which connects students and early professionals with experienced mentors from their respective fields. The goal is to provide personalized guidance from industry leaders. In the first session, around 60 mentors and mentees from various domains participated in a virtual session, joining from across the globe.



Vidya tai's home visit



Small Gathering in Bay Area



Career Forum MentorConnect